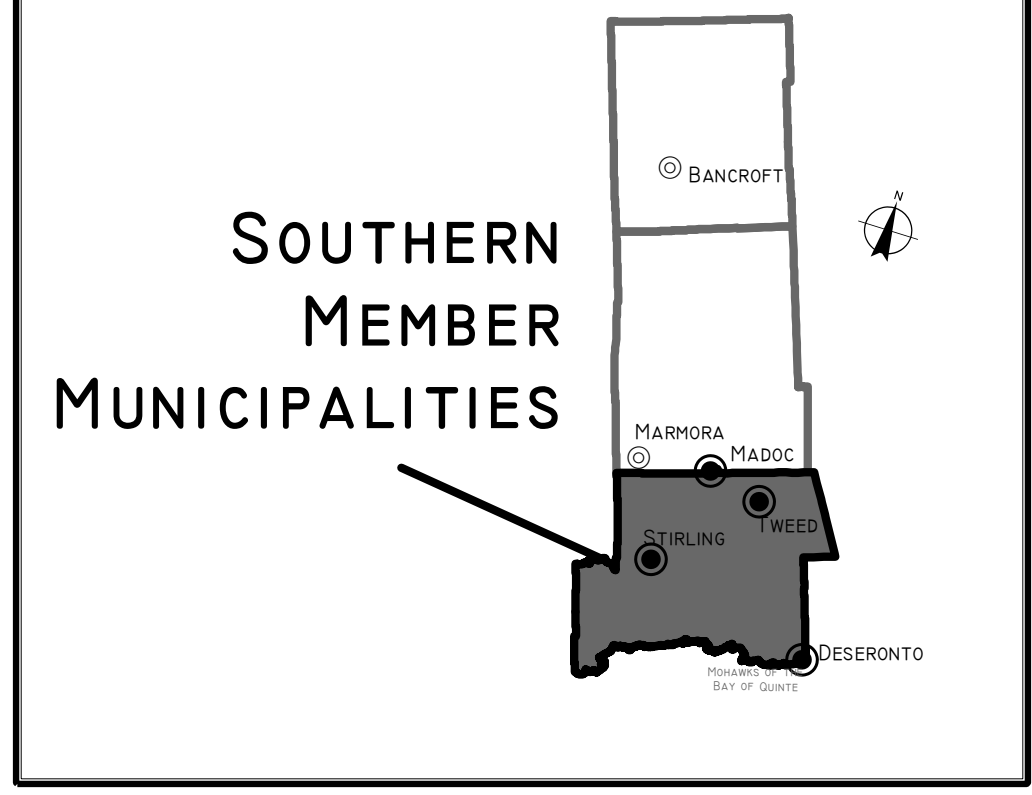


# HASTINGS COUNTY OFFICIAL PLAN

## AGGREGATE & MINERAL RESERVES

### OP-C SCHEDULE



THIS IS TO CERTIFY THAT THIS MAP WAS ADOPTED AS OFFICIAL PLAN SCHEDULE OP-C OF THE COUNTY OF HASTINGS OFFICIAL PLAN 2017-0030. PLOT DATE: 12/18/2017 SIGNING DATE: 12/19/2017

JIM DUFFIN, CLERK OF HASTINGS COUNTY

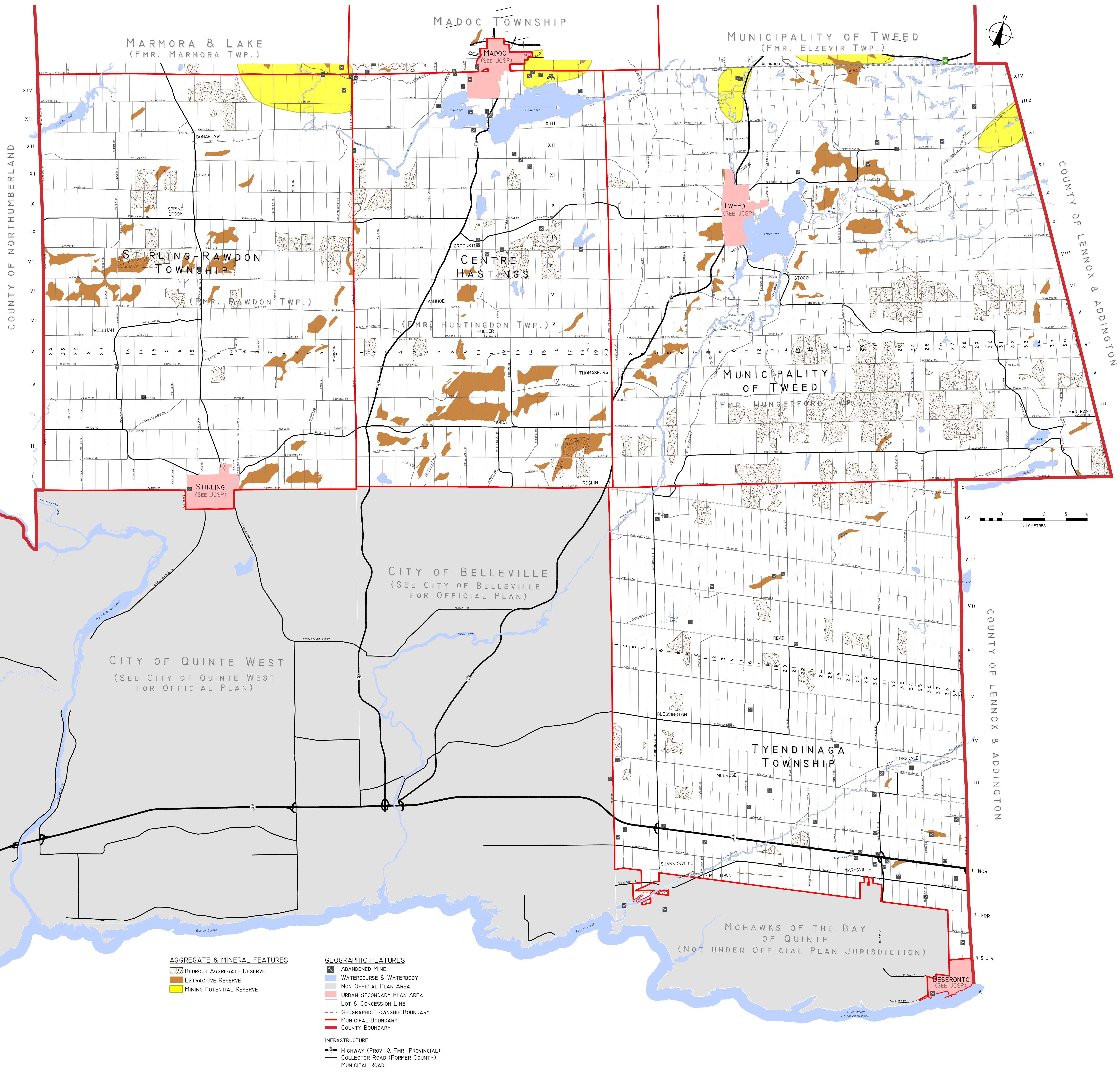
RODNEY COONEY, WARDEN OF HASTINGS COUNTY

THIS SCHEDULE FORMS A PART OF THE COUNTY OF HASTINGS OFFICIAL PLAN AND MUST BE READ IN CONJUNCTION WITH THE WRITTEN TEXT. VISIT [WWW.HASTINGSCOUNTY.COM](http://WWW.HASTINGSCOUNTY.COM) FOR THE FULL OFFICIAL PLAN. PLEASE REFER TO SECONDARY PLAN SCHEDULES FOR DETAILED MAPPING OF URBAN AREAS. SOME SPECIAL POLICY AREAS MAY ALSO HAVE DETAILED MAPS WITHIN THE TEXT.

PRODUCED BY THE COUNTY OF HASTINGS PLANNING & DEVELOPMENT DEPARTMENT. DATA SUPPLIED UNDER LICENSE BY MEMBERS OF THE ONTARIO GEOSPATIAL DATA EXCHANGE AND THE COUNTY OF HASTINGS. THE COUNTY OF HASTINGS DISCLAIMS ALL RESPONSIBILITY FOR ERRORS, OMISSIONS OR INACCURACIES IN THIS PUBLICATION.

June 22, 2018

SEE CENTRAL "OP-C" SCHEDULE



- AGGREGATE & MINERAL FEATURES**
- BEDROCK AGGREGATE RESERVE
  - EXTRACTIVE RESERVE
  - MINING POTENTIAL RESERVE

- GEOGRAPHIC FEATURES**
- ABANDONED MINE
  - WATERCOURSE & WATERBODY
  - NON OFFICIAL PLAN AREA
  - URBAN SECONDARY PLAN AREA
  - LOT & CONCESSION LINE
  - GEOGRAPHIC TOWNSHIP BOUNDARY
  - MUNICIPAL BOUNDARY
  - COUNTY BOUNDARY

- INFRASTRUCTURE**
- HIGHWAY (PROV. & FMR. PROVINCIAL)
  - COLLECTOR ROAD (FORMER COUNTY)
  - MUNICIPAL ROAD

