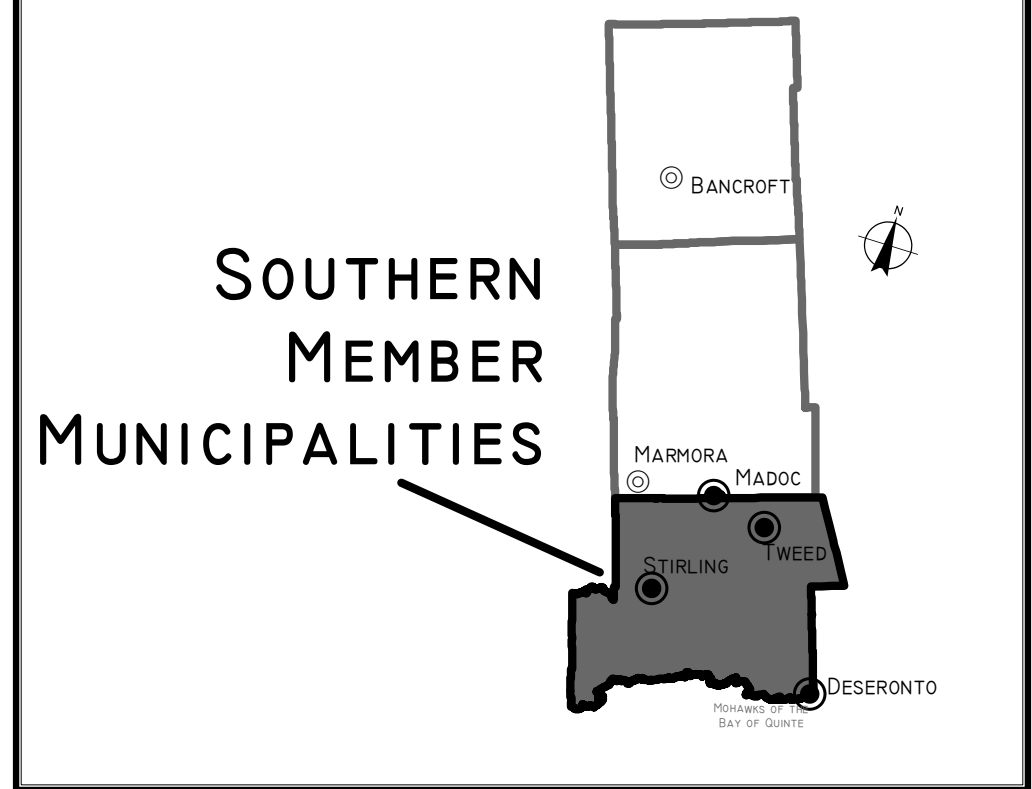


HASTINGS COUNTY OFFICIAL PLAN

NATURAL HERITAGE FEATURES & AREAS

OP-B SCHEDULE

SEE CENTRAL "OP-B" SCHEDULE

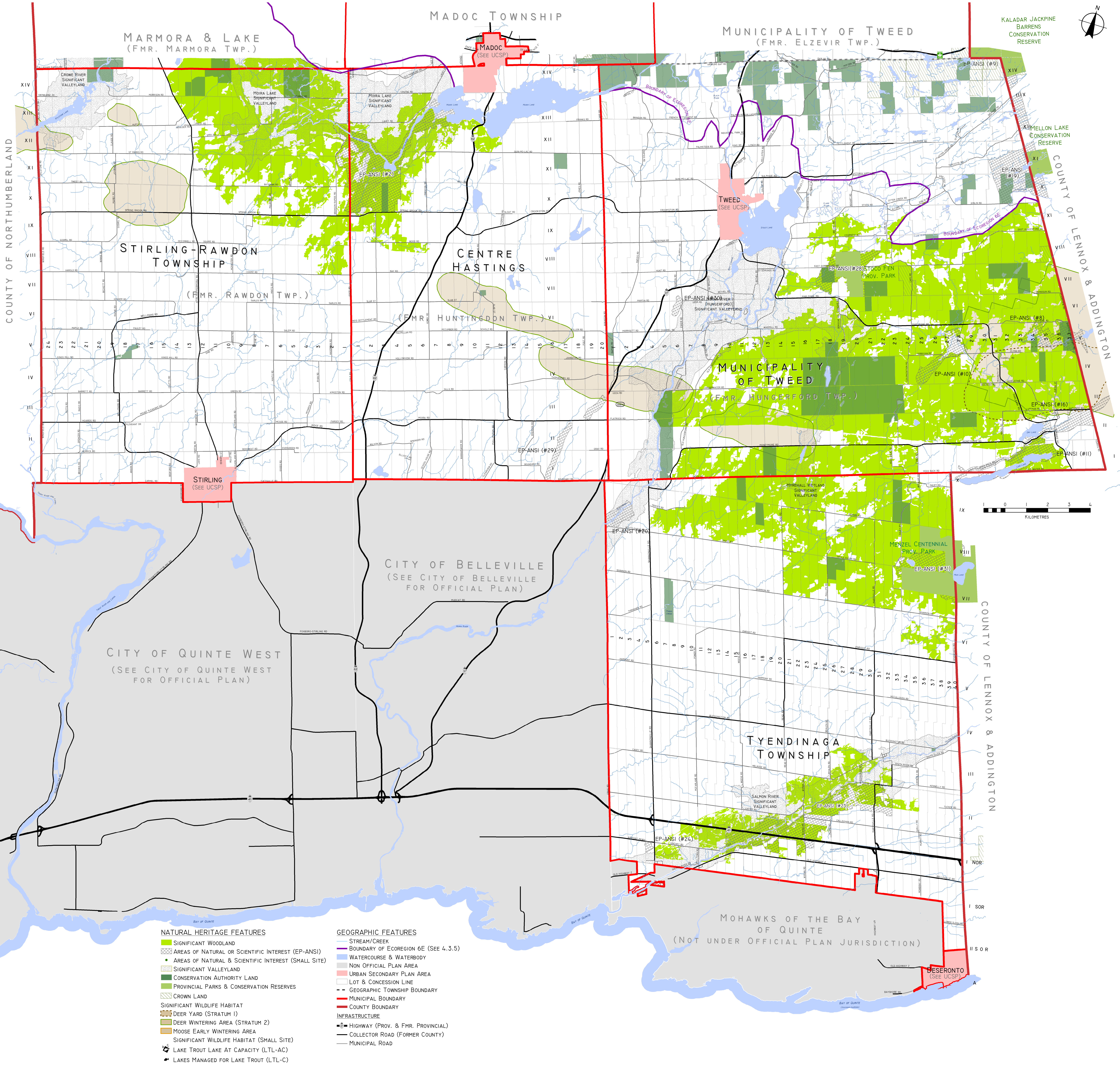


THIS IS TO CERTIFY THAT THIS MAP WAS ADOPTED AS OFFICIAL PLAN SCHEDULE OP-B OF THE COUNTY OF HASTINGS OFFICIAL PLAN 2017-0030. PLOT DATE: 12/18/2017 SIGNING DATE: 12/19/2017

JIM DUFFIN, CLERK OF HASTINGS COUNTY
RODNEY COONEY, WARDEN OF HASTINGS COUNTY

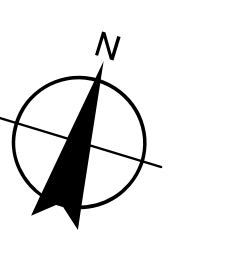
THIS SCHEDULE FORMS A PART OF THE COUNTY OF HASTINGS OFFICIAL PLAN AND MUST BE READ IN CONJUNCTION WITH THE WRITTEN TEXT. VISIT WWW.HASTINGSCOUNTY.COM FOR THE FULL OFFICIAL PLAN. PLEASE REFER TO SECONDARY PLAN SCHEDULES FOR DETAILED MAPPING OF URBAN AREAS. SOME SPECIAL POLICY AREAS MAY ALSO HAVE DETAILED MAPS WITHIN THE TEXT.

PRODUCED BY THE COUNTY OF HASTINGS PLANNING & DEVELOPMENT DEPARTMENT. DATA SUPPLIED, UNDER LICENSE, BY MEMBERS OF THE ONTARIO GEOSPATIAL DATA EXCHANGE AND THE COUNTY OF HASTINGS. THE COUNTY OF HASTINGS DISCLAIMS ALL RESPONSIBILITY FOR ERRORS, OMISSIONS OR INACCURACIES IN THIS PUBLICATION. June 22, 2018



- NATURAL HERITAGE FEATURES**
- SIGNIFICANT WOODLAND
 - ▨ AREAS OF NATURAL OR SCIENTIFIC INTEREST (EP-ANSI)
 - AREAS OF NATURAL & SCIENTIFIC INTEREST (SMALL SITE)
 - ▨ SIGNIFICANT VALLEYLAND
 - ▨ CONSERVATION AUTHORITY LAND
 - ▨ PROVINCIAL PARKS & CONSERVATION RESERVES
 - ▨ CROWN LAND
 - ▨ SIGNIFICANT WILDLIFE HABITAT
 - ▨ DEER YARD (STRATUM 1)
 - ▨ DEER WINTERING AREA (STRATUM 2)
 - ▨ MOOSE EARLY WINTERING AREA
 - ▨ SIGNIFICANT WILDLIFE HABITAT (SMALL SITE)
 - ▨ LAKE TROUT LAKE AT CAPACITY (LTL-AC)
 - ▨ LAKES MANAGED FOR LAKE TROUT (LTL-C)

- GEOGRAPHIC FEATURES**
- STREAM/CREEK
 - BOUNDARY OF ECOREGION 6E (SEE 4.3.5)
 - WATERCOURSE & WATERBODY
 - NON OFFICIAL PLAN AREA
 - URBAN SECONDARY PLAN AREA
 - LOT & CONCESSION LINE
 - GEOGRAPHIC TOWNSHIP BOUNDARY
 - MUNICIPAL BOUNDARY
 - COUNTY BOUNDARY
 - INFRASTRUCTURE
 - HIGHWAY (PROV. & FMR. PROVINCIAL)
 - COLLECTOR ROAD (FORMER COUNTY)
 - MUNICIPAL ROAD



KALADAR JACKPINE BARRENS CONSERVATION RESERVE

KUMMELLON LAKE CONSERVATION RESERVE

EP-ANSI (#9)

EP-ANSI (#19)

EP-ANSI (#8)

EP-ANSI (#10)

EP-ANSI (#16)

EP-ANSI (#11)

EP-ANSI (#20)

EP-ANSI (#31)

EP-ANSI (#24)

EP-ANSI (#29)

EP-ANSI (#20)

EP-ANSI (#20)

EP-ANSI (#20)

EP-ANSI (#20)

EP-ANSI (#20)

EP-ANSI (#20)

EP-ANSI (#20)

EP-ANSI (#20)

EP-ANSI (#20)

EP-ANSI (#20)

EP-ANSI (#20)

EP-ANSI (#20)

EP-ANSI (#20)

EP-ANSI (#20)

EP-ANSI (#20)

EP-ANSI (#20)