



Child and Family Centre



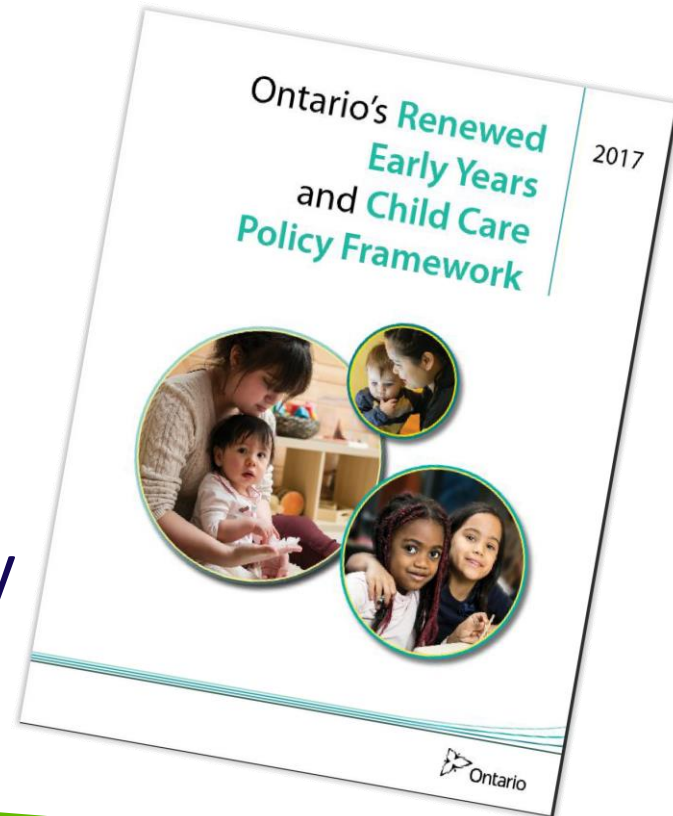
EarlyON Child and Family Centres

Background

- In June, 2017, the Ministry of Education announced that Hastings County will receive \$1.4 Million dollars to support the implementation of the EarlyON Child and Family Centres

Background Cont.

- Ontario's children and families are well supported by a system of responsive, high-quality, accessible, and increasingly integrated early years programs and services that contribute to healthy child development today and a stronger future tomorrow



Background Cont..

- This is a transformation from the previous Ontario Early Years Centres; becoming a cohesive and supportive system
- There is an **opportunity** to build on current strengths to meet the changing needs of children and families

Service Plan

- A Service Plan was prepared and submitted to the Ministry of Education with various recommendations to support the implementation of EarlyON
- Over 1300 community members participated in the engagement process
- 860 surveys were completed in Hastings County

Leads in Hastings County

Effective July 1, 2018, three lead Service Providers will provide EarlyON Services throughout Hastings County:

- 1) Family Space
- 2) North Hastings Children's Services
- 3) Trenton Military Family Resource Centre

Guiding Principles

Service Providers and Service Managers will be guided by the following principles when delivering and evaluating EarlyON Centres:

- Child and Family Centred
- Welcoming
- High Quality
- Inclusive
- Integrated
- Community Led

How Does Learning Happen?

- EarlyON Centres are expected to use *How Does Learning Happen?* (HDLH) to guide, develop and deliver programs. HDLH supports the adoption of a common pedagogical approach across early years settings.

How Does Learning Happen? Cont.

- Four foundations for learning include:
 - ✓ Belonging
 - ✓ Well-being
 - ✓ Engagement
 - ✓ Expression



‘Schools First’



Schools provide an environment where services can be co-located and integrated for the purpose of reducing transitions, building stronger connections between children, families and early years and school professionals.

Schools First supports a consistent approach to early learning and education as part of a continuum

Partnerships/Collaboration

Various partnerships exist and will continue to grow and develop:

- Algonquin Lakeshore District Catholic School Board;
- Hastings and Prince Edward District School Board;
- Conseil des écoles publiques de l'Est de l'Ontario;
- Conseil des écoles catholiques du Centre-Est

Branding

Early ON
Child and Family Centre

ON y va
Centre pour l'enfant et la famille

**ON
y va**
Centre pour l'enfant et la famille

**Early
ON**
Child and Family Centre

Journey Together

- In November 2016, the Ministry of Education announced support for the implementation of early years *Journey Together: Ontario's Commitment to Reconciliation with Indigenous Peoples*

Journey Together Cont.

This initiative is intended to enhance access to culturally relevant, Indigenous-led early years programs and services off-reserve, including child and family programs



Algonquin Inòdewiziwin

Successful funding to support the establishment of an Algonquin Inòdewiziwin Child and Family Centre in Maynooth including capital and ongoing operating dollars



Algonquin Inòdewiziwin Cont.

- Program is based out of Maynooth Public School with outreach to families with young children in North Hastings
- Parents and caregivers will have access to high quality indigenous services that will support them in their roles as their children's first teachers
- Children and parents will learn the Algonquin language, history and culture

Kahwa:Tsire

- The Kahwa:Tsire Child and Family Program will be an innovative program with several approaches to enhance awareness of Indigenous language and culture for off reserve Indigenous populations
- A joint proposal between Prince Edward-Lennox and Addington Social Services (PELASS), County of Hastings, City of Kingston-County of Frontenac and the Mohawks of the Bay of Quinte

Kahwa:Tsire Cont.

- The hiring of Language and Culture Leaders will directly deliver drop-in programs as well as traditional celebrations
- Leaders will also continue to develop and circulate the e-newsletter, “Come Walk in my Moccasins”



“Great things happen when we work together to engage and support children to become confident and courageous individuals” – Children’s Services



Thank you!



Carmela Ruberto, EarlyON Child and Family Centre Coordinator,
613-966-1311 ext 2377 rubertoc@hastingscounty.com

Cathy Utman, Children's Services Manager,
613-966-1311 ext 2340, utmanc@hastingscounty.com